



Enjoy Your City Parks!



CITY OF LA GRANGE, KENTUCKY

Dear Friends,

The City of La Grange and the La Grange Park Board are pleased to bring you *Enjoy Your City Parks!* — a reference describing the many opportunities for recreation and beauty right in our own backyard: James T. Beaumont Community Center (which also houses La Grange City Hall), John T. Walsh Park, Raymond & Irene Wilborn Park, Eddie Mundo Park, The Glen, and the Eagle Creek Golf Course. Together these six venues provide something for every resident of La Grange.

The City of La Grange Park system is under the direction of the Mayor and City Council and managed by the City of La Grange Park Board, an appointed seven-member volunteer board established in 1985. Having such a variety of recreational opportunities would not exist without the committed support of current and past mayors and council members, city hall staff, and the La Grange Public Works and Police Departments.

Through diligent management and responsible spending, the City of La Grange Park Board operates these six recreational facilities on an annual budget of \$30,000 which covers utilities, equipment replacement, repairs, and upgrades. The City also budgets \$200,000 to support community center programming as outlined on page 6 of this publication. A significant amount of additional support is provided by grants\*, gifts, and volunteers who are interested in maintaining our City's public spaces for generations to come.

The La Grange Park Board holds regular monthly meetings on the first Wednesday of the month at 5 pm at the Community Center. We welcome your attendance at these public meetings and encourage you to take advantage of the recreational opportunities available within our city.

Sincerely,

*Blake Haselton*

Blake Haselton, Chairman  
City of La Grange Park Board

*\*All costs associated with this publication are funded with a grant from the Raymond & Irene Wilborn Charitable Foundation. No taxpayer funds were used in its production or mailing.*

### City of La Grange

307 W. Jefferson Street  
La Grange, KY 40031  
Phone: 502-222-1433  
Fax: 502-222-5875  
Contact: [Info@lagrangeky.net](mailto:Info@lagrangeky.net)  
Email: [fbrush@lagrangeky.net](mailto:fbrush@lagrangeky.net)

### La Grange Mayor and City Council members

Joe Davenport, Mayor  
[mayor@lagrangeky.net](mailto:mayor@lagrangeky.net)  
Stephanie Chalfant  
Tad Humble  
Trey Kamer  
Jean Knight  
William Lammlein  
Debbie Pollard  
Shannon Pottie  
Ann Zimlich

### City of La Grange Park Board

Blake Haselton, Chairman  
[blake.haselton@louisville.edu](mailto:blake.haselton@louisville.edu)  
Earl Hedgespeth-Vice Chairman  
Holly Urban-Secretary  
Ida Beaumont  
Brad Clifford-NOLL  
Jay Rogers  
Glenn Yost



307 WEST JEFFERSON ST.  
LA GRANGE, KY 40031

# Eagle Creek Golf Course

2820 S. HIGHWAY 53



## Eagle Creek Golf Course Named No. 1 Municipal Golf Course in Kentucky by *Golf Digest!*

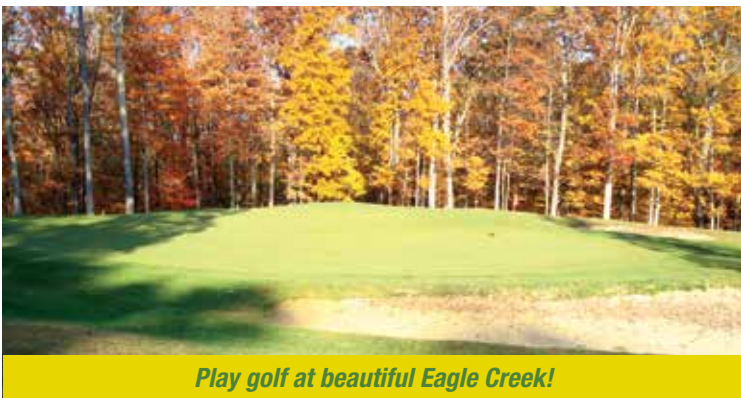
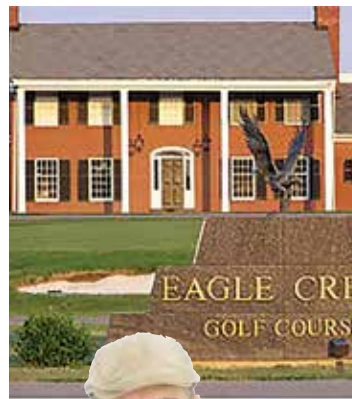
Eagle Creek Golf Course is a beautiful public 18-hole golf course, owned by the City of La Grange and managed on-site by Guy Breeds. It is conveniently located just 1.5 miles south of I-71 on Highway 53.

Eagle Creek is open to the public seven days a week and can provide a challenge to golfers of all skill levels. The course is well maintained and features Bermuda fairways, bent grass greens, and woods surrounding a number of holes. The serene setting makes it a perfect escape from the hustle and bustle of life to get out and enjoy a good time with family or friends.

For those looking for a little bit of friendly competition, Eagle Creek offers both a 9-hole ladies' league and a 9-hole men's league over the summer months.

Come out and play golf at Eagle Creek Golf Course and see why our course is the #1 MUNICIPAL GOLF COURSE IN KENTUCKY – *Golf Digest*, August 2009.

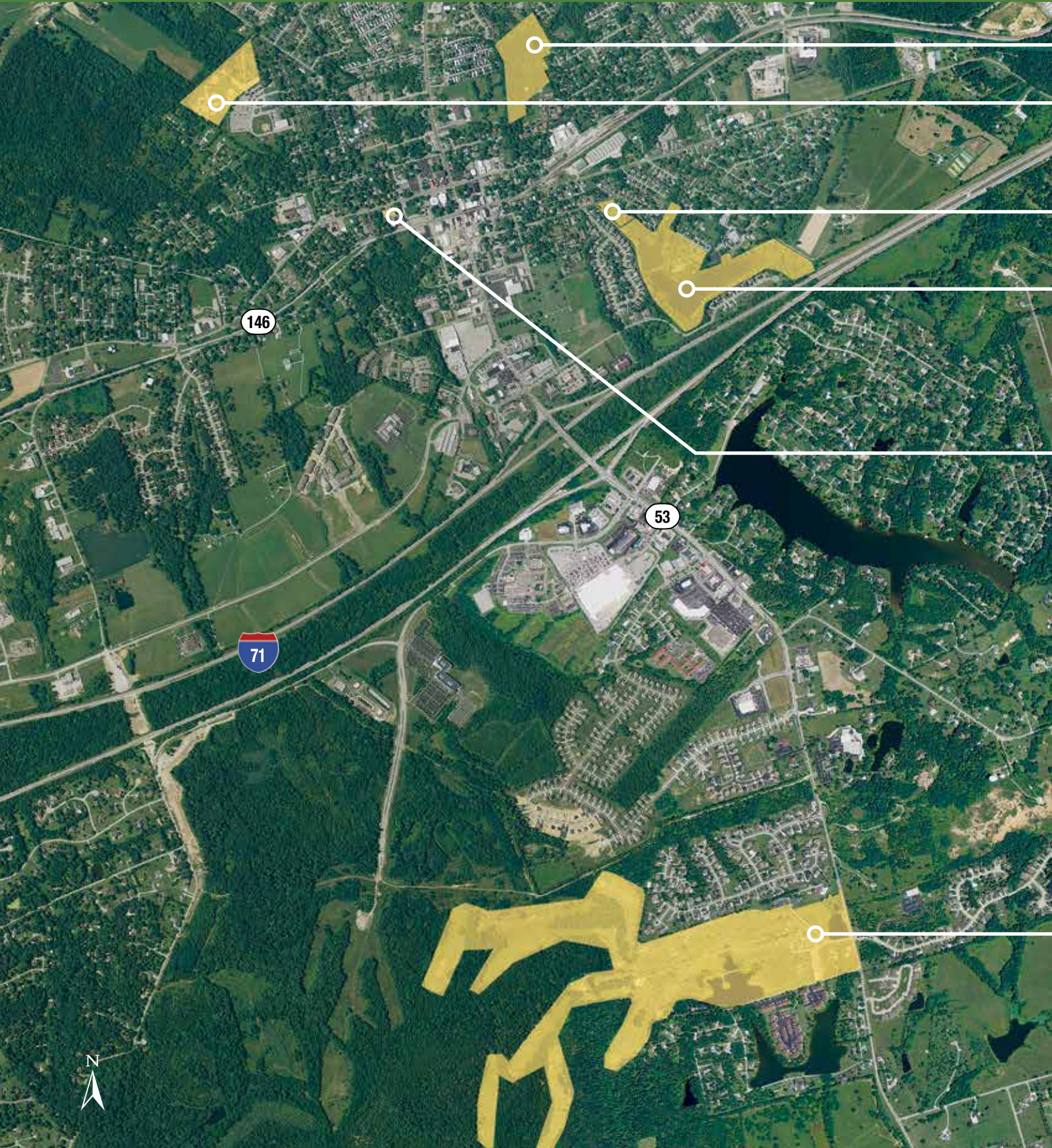
Call us at 222-7927, or visit our website for more information about rates, tee-time specials, online tee-times, league play, tournaments and more. Simply scan the QR Code below or go to [www.eaglecreekgolfky.com](http://www.eaglecreekgolfky.com).



*Play golf at beautiful Eagle Creek!*



# Overview: City of



# La Grange Parks

**The Glen** (See page 5)

**John T. Walsh Park**  
(See page 4)

**Eddie Mundo Park**  
(See page 5)

**Raymond & Irene  
Wilborn Park** (See page 5)

**James T. Beaumont  
Community  
Center** (See page 6)

**Eagle Creek Golf Course**  
(See page 1)

	James T. Beaumont Community Center	John T. Walsh Park	Raymond & Irene Wilborn Park	Eddie Mundo Park	The Glen	Eagle Creek Golf Course
Aerobic Room	■					
Baseball Fields		■				
Basketball Court	■					
Classrooms	■					
Fishing			■		■	
Fitness Trail		■				
Game Room	■					
Gazebo		■		■		
Golf Course						■
Kitchen	■					
Meeting Room	■					■
Open Play Field		■	■	■	■	
Picnic Tables		■	■	■		■
Picnic Shelter		■	■			
Playground		■	■	■		
Putting Green						■
Restrooms	■	■	■			■
Walking Track	■					
Walking Trail					■	

## These are your parks to enjoy! Please help us keep them beautiful.

**Vandalism:** The destruction of park property hurts us all. While our police department makes unscheduled patrols through the park system, our best success has been with citizens who report it in progress, or witness or hear about it and then report it to the police. Please call 222-0111 to report vandalism.

**Geese and Ducks:** Wilborn Park is overpopulated with ducks and geese. Feeding of ducks and geese causes overpopulation, water pollution, overcrowding, delayed migration, nutritional problems and disease — both for waterfowl and humans. Please DO NOT feed the geese.

**Litter:** Trash and garbage in our parks ruins the park experience for all of us. Please “leave it like you found it” and use trash and garbage receptacles provided.

# John T. Walsh Park

600 NORTH FOURTH ST.



Walsh Park is named in honor of a local physician who served in our community for many years. The park is located on the west side of Fourth Street, in the northwest quadrant of the City. The park is accessed from 4th Street in La Grange and includes a large pavilion/picnic shelter with restrooms (donated by the La Grange Rotary Club in honor of Raymond Wilborn), a gazebo, picnic tables, a large playground apparatus and a large open play field. Ample parking is provided adjacent to the pavilion. The facility is frequently used for family reunions and events, and outdoor meetings. A fitness trail, constructed as part of a Boy Scout Eagle Scout project, lies on the edge of the North Oldham Little League facilities.

Also located in Walsh Park are the baseball, t-ball and softball fields of the North Oldham Little League (NOLL). The President of NOLL serves as one of the seven members of the Park Board. NOLL sponsors little league baseball sanctioned seasons in the fall and spring/summer. Local businesses sponsor teams and support a family friendly atmosphere, a quality that makes La Grange a

special place to live, work and play. More than 600 youngsters play in each of the seasons of ball. The NOLL facilities were developed, constructed and are maintained by NOLL, and include a concession stand, storage building, batting cages and restrooms. Lights were installed to enable playing of games after dark. The NOLL will host the state little league championship this summer.

The 2011 NOLL 12-year-old baseball all-stars were the Kentucky District 2 Champions, Kentucky State Champions, Great Lakes Region Champions and played in the nationally televised Little League World Series in Williamsport, Pennsylvania. The community recognized the team as Grand Marshalls in the Annual Oldham County Day parade for their exemplary sportsmanship and representation of themselves, their families, NOLL and La Grange. NOLL, and our community, are blessed with many volunteer coaches, parents, family, friends and supporters who make a quality experience for all a very high priority.



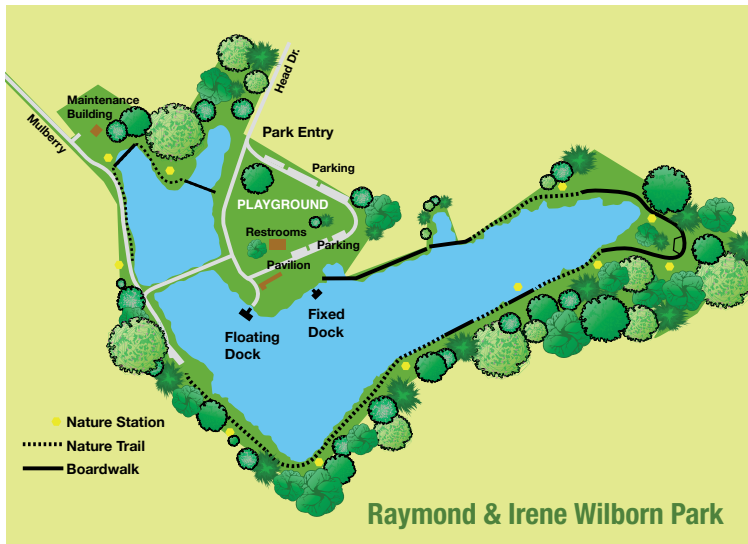
Walsh is home to North Oldham Little League



The picnic shelter at Walsh

# Raymond & Irene Wilborn Park, Eddie Mundo Jr. Park, The Glen

## CENTRAL L A GRANGE



**Wilborn Park**, located off Head Lane and west of Hoffman Lane, was formerly the L&N Railroad company retreat site. It was renamed in honor of longtime city Mayor and benefactors Raymond and Irene Wilborn. Two fishing lakes (no boating or swimming permitted), provide a long shoreline of peace and tranquility. The lakes consist of 30 acres of water, a pavilion/picnic shelter, restroom, playground apparatus, open fields, large mature trees and an abundance of wildlife

Mundo Park includes playground equipment, a gazebo (contributed and constructed by our Police Department), picnic tables, and adequate off-street parking.

**The Glen**, the newest addition to the system, is an 11-acre conservation park located west of Highway 53 and entered via Maple Street in the historic "Courts" section of La Grange. The "Elizabeth Waters Trail" links the park and Highway 53. The park has opened and is focused on preserving the natural habitat with outdoor walking trails through natural, untouched, wooded habitat with spring fed creeks and a pond carrying you back in time to the early years of the City. Acquisition of the area was made possible through a grant by the Head Foundation.



**Eddie Mundo Jr. Park**, located on Washington Street near Mulberry Street, adjoins Wilborn Park. This park is named in honor of La Grange Police Officer Eddie Mundo Jr. who was killed in the line of duty in April, 2003. The park memorializes his ultimate sacrifice for the community he honorably served.



*Playground at Mundo Park*



*Fishing tournament: Wilborn*



*Nature's serenity at The Glen*

# James T. Beaumont/ La Grange Community Center

307 WEST JEFFERSON STREET

The James T. Beaumont/ La Grange Community Center, located at 307 West Jefferson Street in La Grange, is a focal center of the City of La Grange. Named in honor of James T. Beaumont, a long-serving City Council member who was a strong advocate for youth in our community, the Center also is home to La Grange City Hall. Facilities include a full size (regulation) basketball court, walking track, full kitchen and 150+ seating capacity meeting room, restrooms, four classrooms, a game room and an aerobics room. Hours of operation are Monday-Friday, 9 am to 9 pm, and Saturday, 10 am to 6 pm.

The Park Board contracts with the YMCA to provide programs and staff at the Community Center. The Center is open to all residents of Oldham County and does not require membership to the YMCA. There is no charge for admission and no expense for participation, with few exceptions. Up-to-date information related to programs at the Community Center can best be found by accessing the Community Center website

at <http://www.ymcalouisville.org/oldham-county/lagrange-community-center/facility-information.html>. Phone is 502-225-6474 and email at [jlewis@ymcalouisville.org](mailto:jlewis@ymcalouisville.org).

Annual usage totals since the opening of the Community Center during the 2006-07 fiscal year (July-June) have steadily increased from 25,165 to 44,256 in 2013-14, an average annual increase of 10.84%. Highest usage activities (based on sign-ins) include (1) Basketball; (2) Kids Club (after-school care); (3) Walking Track; (4) Enrichment Activities; (5) Log Cabin Quilters; (6) Dare to Care Food Bank; (7) Aerobics; (8) Birthday parties; (9) Ironman Triathlon; (10) Oldham County Day; (11) Karate; (12) Cooking/Canning Classes.



*After-school activities*



*Aerobics classes*

